

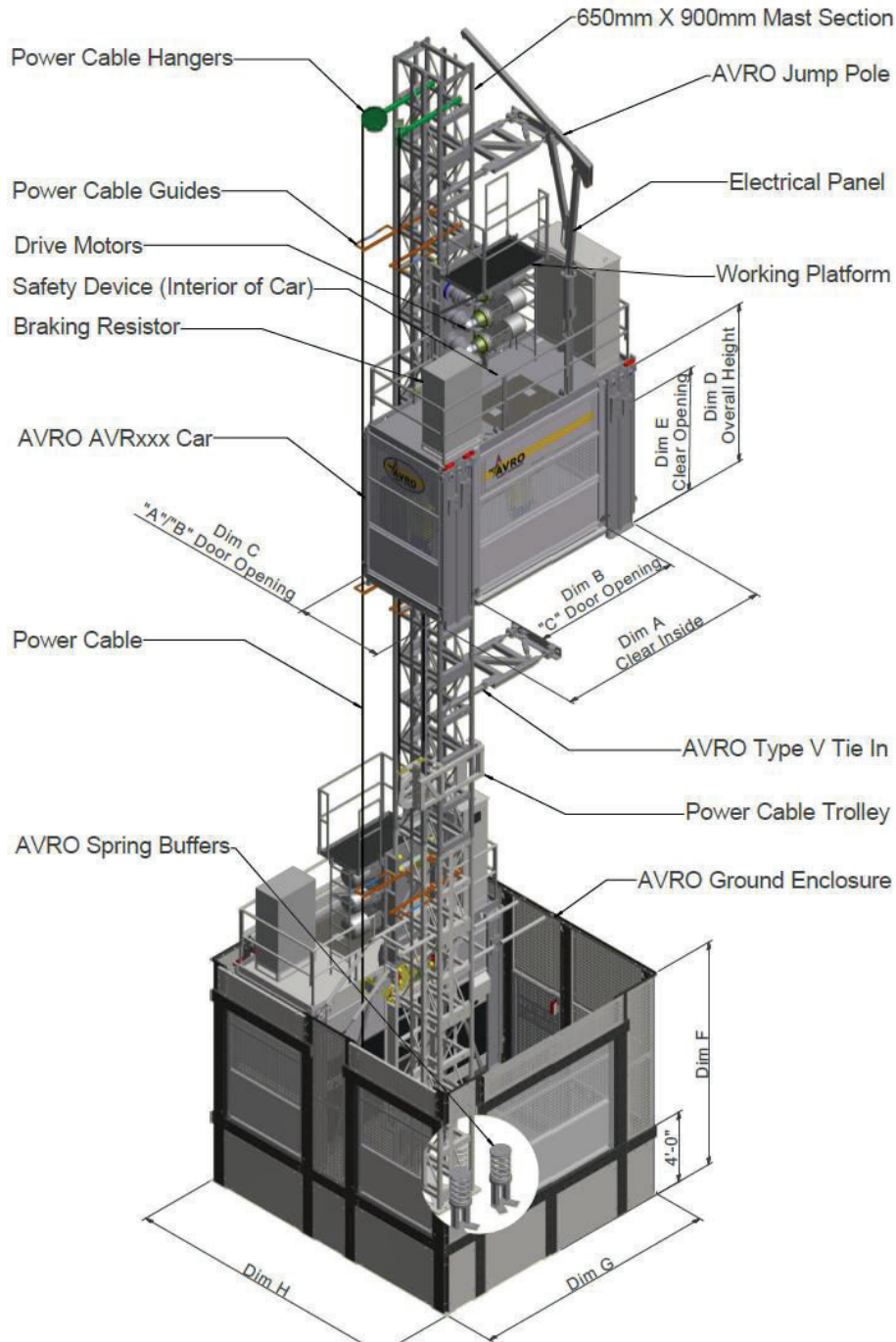


AVRO Model AVR700 MS

7000 lb Dual Cage Man & Material Hoist

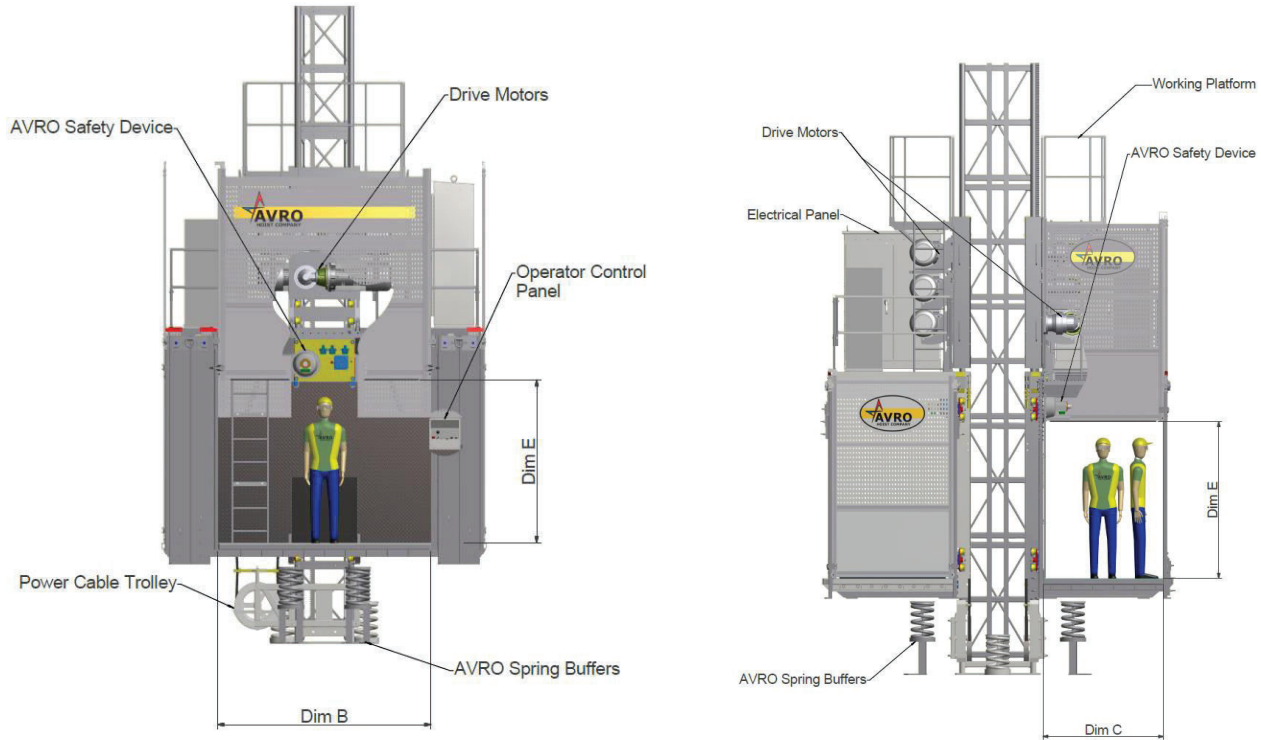
AVRO Model AVR700 MS

7000 lb Dual Cage Man & Material Hoist



AVRO Model AVR700 MS

7000 lb Dual Cage Man & Material Hoist



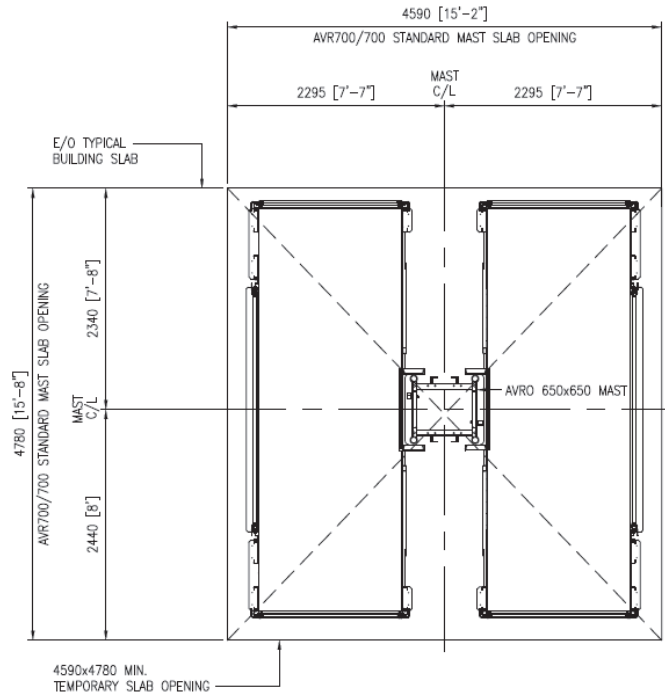
	AVR550		AVR660		AVR700	
DIMENSION	Imperial	Metric	Imperial	Metric	Imperial	Metric
A-Clear Inside Length	10'6"	3.20 m	12'6"	3.81 m	14'0"	4.27 m
B-Optional Side Door Width	6'0"	1.83 m	8'6"	2.59 m	8'6"	2.59 m
C-Front/Rear Doors Width	5'0"	1.52 m	5'0"	1.52 m	5'0"	1.52 m
D-Overall Height	9'6"	2.90 m	9'6"	2.90 m	9'6"	2.90 m
E-Door Opening Height	6'6"	2.00 m	6'6"	2.00 m	6'6"	2.00 m
F-Enclosure Height	12'10"	3.91 m	12'10"	3.91 m	12'10"	3.91 m
G-Enclosure Length	12'0"	3.66 m	14'0"	3.66 m	15'6"	3.66 m
H-Enclosure Width	15'8"	4.78 m	15'8"	4.78 m	15'8"	4.78 m



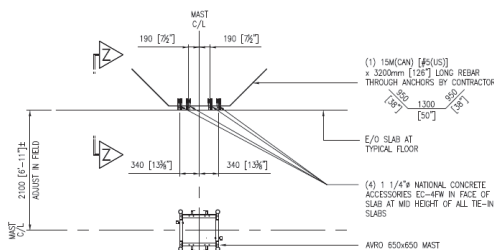
AVRO Model AVR700 MS

7000 lb Dual Cage Man & Material Hoist

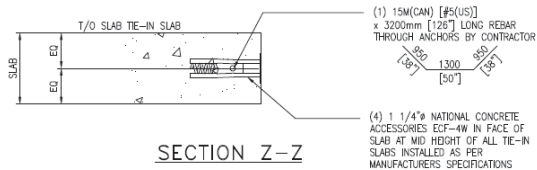
NOTE:
TEMPORARY SLAB OPENING SHOWN IS A
CLEAR UNRESTRICTED OPENING, FREE
OF ANY OBSTRUCTIONS INCLUDING
REINFORCING STEEL PROJECTION.



AVR700/700 SLAB OPENING PLAN LAYOUT



AVRO TYPE V STANDARD MAST
CAST-IN PLACE ANCHOR LAYOUT

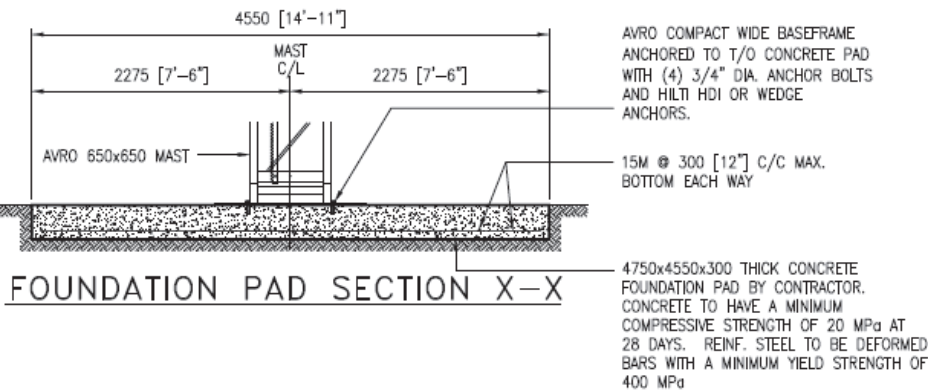
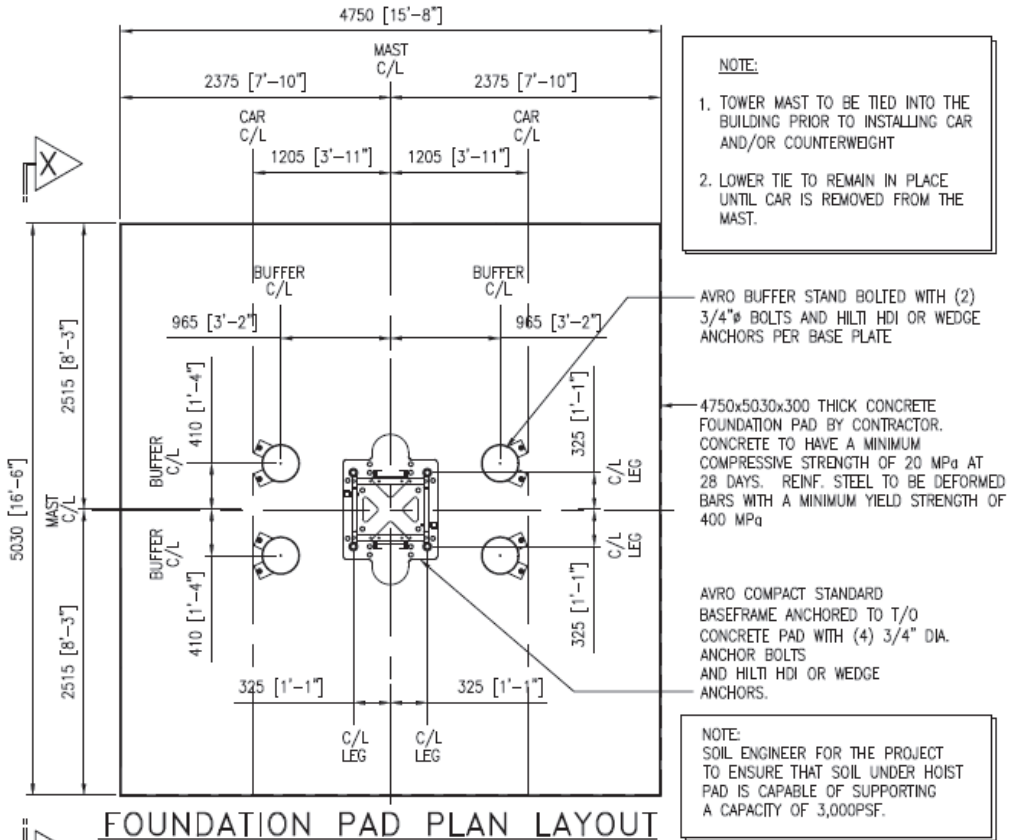


SECTION Z-Z



AVRO Model AVR700 MS

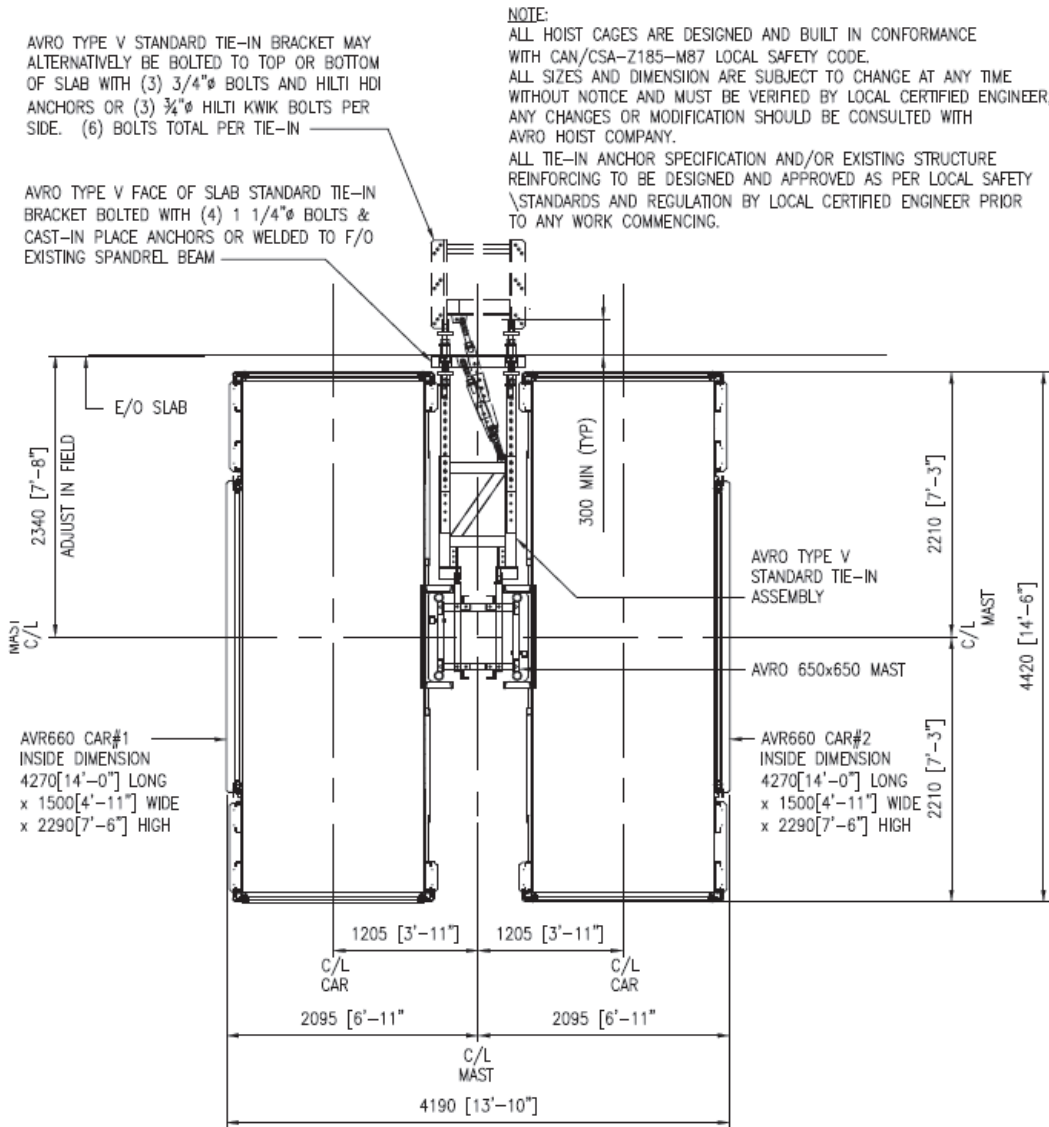
7000 lb Dual Cage Man & Material Hoist



AVRO Model AVR700 MS

7000 lb Dual Cage Man & Material Hoist

AVRO Model AVR700/700MS
(650x650 MAST)



AVRO AVR700/700 TYPICAL TYPE V
TIE-IN DETAIL PLAN LAYOUT



AVRO Model AVR700 MS

7000 lb Dual Cage Man & Material Hoist

TECHNICAL DATA	METRIC	IMPERIAL
Configuration	Twin cage hoist	Twin cage hoist
Rated load capacity (per car)	3200 kg	7000 lbs
Rated speed	61 m/min	200 fpm
Counterweight	No	No
Maximum travel distance	450 m	1476 ft
Lifting device (Jump pole) cap.	340 kg	750 lbs
Safety device	Type D	Type D
Gear ratio	13.7:1	13.7:1
Brake rating (per motor)	300 Nm	210 ft-lb
CAR DIMENSIONS		
Inside length	4.27 m	14'-0"
Inside width	1.52 m	5'-0"
Inside height	2.76 m	7'-6-1/2"
Front/rear gate opening width	1.52 m	5'-0"
Front/rear gate opening height	2.00 m	6'-6"
Optional side gate opening width	2.59 m	8'-6"
Optional side gate opening height	2.00 m	6'-6"
ELECTRICAL DATA		
Power supply	460/3/60	460/3/60
3-Motor drive machinery		
Horsepower	(3)x22kW	(3)x30hp
Full load current	225 Amp	225 Amp
Starting current	Varies	Varies
Variable frequency drive	132kW	200hp
Brake power supply	220VDC	220VDC
WEIGHTS		
Gross weight (per car)	4700 kg	10,374 lbs
Weight of Mast (650X650X8mm)	210 kg	462 lbs
Weight of travelling cable system	6 kg/m	4 lb/ft
Weight of Tie-in	10% of total mast	10% of total mast

